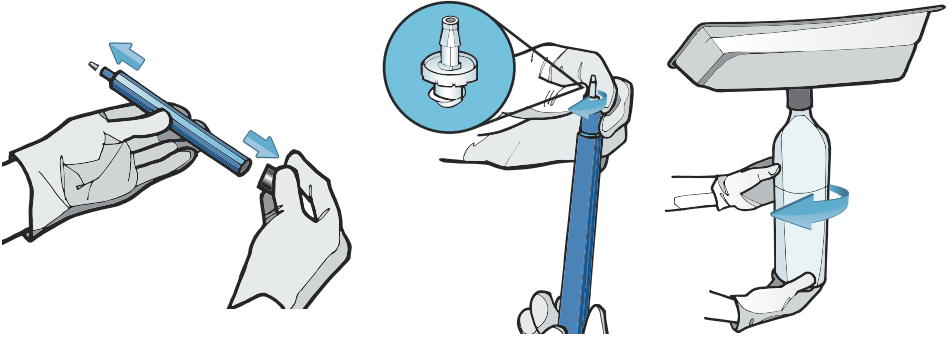


CARTRIDGE INSTALLATION

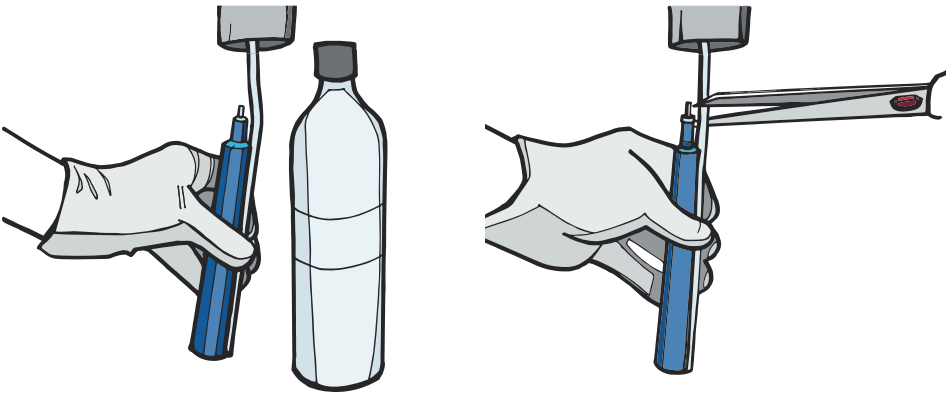
1. Prep

Practicing aseptic technique, remove the dark blue vinyl shipping caps from both ends of the cartridge. Then, attach the clear female luer lock to the cartridge. Remove the water bottle from the dental unit.



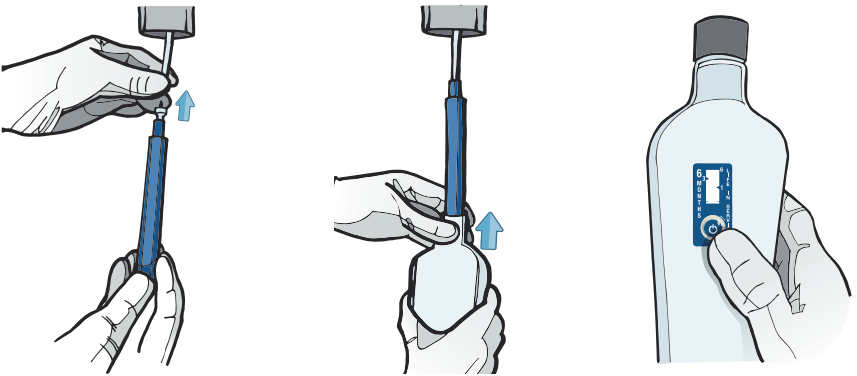
2. Measure

Place the cartridge and water bottle alongside the unit's uptake tube. When measuring, make sure there is approximately 1/4" between the bottom of the bottle and the cartridge. Then, cut the uptake tube at the top of the cartridge (not including the clear female luer lock).



3. Connect

Connect the cartridge to the uptake tube. Reattach the water bottle to the unit. Set the air pressure to 45psi. Flush cold water through the cartridge for 3-5 minutes. It is normal for water to have a slight tint during initial flush. Lastly, stick the 6-month replacement indicator on your water bottle or maintenance calendar. Activate by pressing firmly on bubble.



Using the 6-Month Replacement Indicator:

Remove adhesive tape and place the 6-month replacement indicator on your water bottle or maintenance calendar. Activate by pressing firmly on bubble. The white window bar will begin to turn red. At six months, the entire window bar will be filled with red, letting you know it's time to replace the cartridge.

Note: Replacement indicators can provide +/- 15% time accuracy. Use as a visual reminder, but rely on documented installation date of each cartridge and replace at 6 months or 120L of water usage.



Shortly After Activation



1 Month



3 Months



6 Months: Replace Cartridge

INSTALL GUIDE

Cartouche de purification de l'eau des unités dentaires (FR)
Cartucho para purificación del agua de la unidad dental (ES)

DENTAL UNIT WATER PURIFICATION CARTRIDGE



Recommended Protocol:

1. Shock First

Shocking is using a strong disinfectant to clean your waterlines. Shocking is an essential part of all effective treatment protocols.

- Shock before installing each cartridge.
- Shock when a water test reveals 200-500CFU/mL. Shock and retest when a water test fails.

Never shock through the cartridge! This can damage the cartridge. Always shock with the included dummy straw and follow these steps:

- 1 Attach the white male luer lock to the gray dummy straw.
- 2 Twist off the cartridge from the clear female luer lock.
- 3 Connect the dummy straw to the clear female luer lock.
- 4 Shock per instructions for use.
- 5 Re-attach the cartridge. If you are using a new cartridge, take note of the installation date and use the 6-month replacement indicator.

REMEMBER: Dummy straws are reusable!

2. Treat Daily - With BluTube

Once installed, the cartridge will continuously treat the water in your dental unit waterlines for up to 6 months.

In the morning:

- Wipe down the outside of the cartridge.
- Fill the water bottle with cold, fresh water and reattach to the dental unit. Flush lines for 2 minutes to start the day and 20-30 seconds between patients.

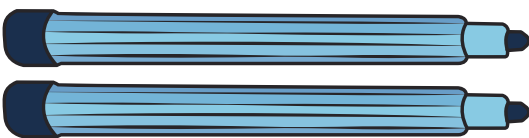
End of the day:

- Remove water bottle from dental unit carefully to avoid damaging cartridge. Empty water from the bottle.
- Reattach empty water bottle to unit.

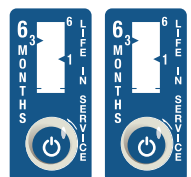
3. Test Quarterly

Testing is the only way to verify if your protocol is effective. It also serves as documentation to protect your practice. Start by testing monthly. If you have received passing results for two consecutive months, then quarterly testing is acceptable. Both in-office and laboratory testing is available through Henry Schein Dental.

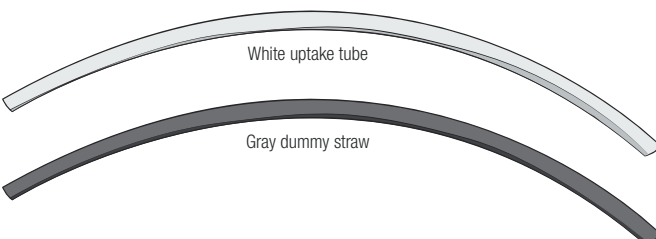
What's in the Box:



Henry Schein Dental Unit Waterline Cartridges



6-month indicators



White uptake tube

Gray dummy straw



Clear female luer lock



White male luer lock